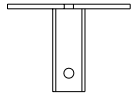
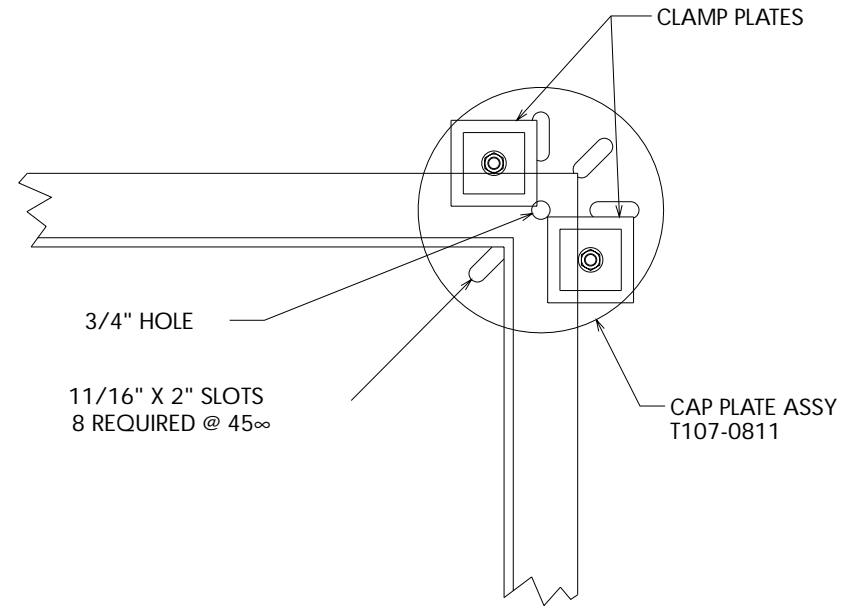
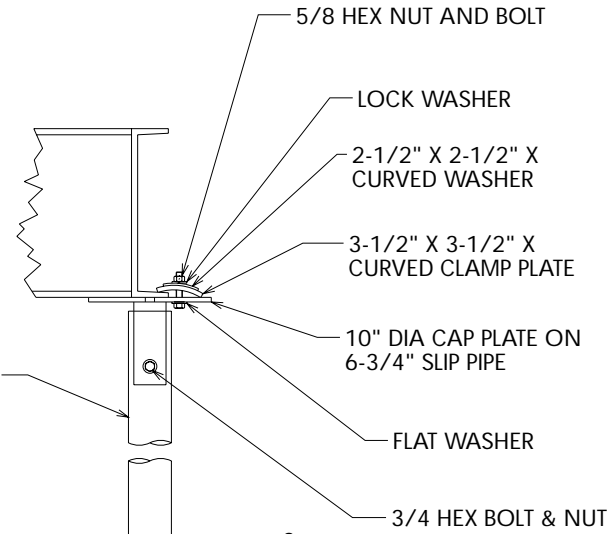
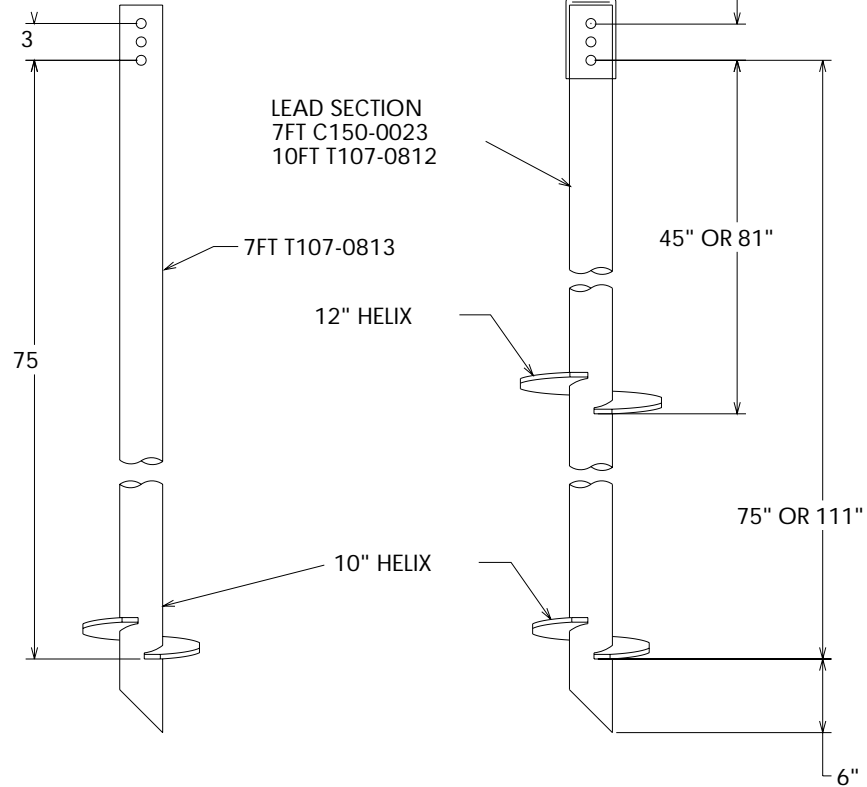


CAP PLATE DETAIL
4-11/16" TO 7-5/16" BOLT CIRCLE



EXTENSIONS IF REQUIRED
3FT C107-0573
5FT C107-0574
7FT C107-0575



==NOTES==

- HOT DIP GALVANIZED PER ASTM A153-(LATEST REV.).
- NOMINAL SPACING BETWEEN HELIX PLATES IS THREE TIMES THE DIAMETER OF THE LOWER HELIX.
- SHAFT MATERIAL PER ASTM A618 OR A252 OR MECHANICAL EQUIVALENT.
- HELIX AND PLATE MATERIAL PER ASTM A635 HOT ROLLED STEEL SHEET, ASTM A36 HOT ROLLED STEEL SHEET, A715 HOT ROLLED HIGH STRENGTH LOW ALLOY STEEL SHEET OR A656 HOT ROLLED STRUCTURAL STEEL PLATE.
- COUPLING BOLTS: 3/4" DIAMETER X 5-3/4" LONG HEX HEAD PER SAE J429 GRADE 5.
- MANUFACTURER TO HAVE IN EFFECT INDUSTRY RECOGNIZED WRITTEN QUALITY CONTROL FOR ALL MATERIALS AND MANUFACTURING PROCESSES.
- ALL WELDING TO BE DONE BY WELDERS CERTIFIED UNDER SECTION 5 OF THE AWS CODE D1.1.
- EXTENSIONS MUST BE PROVIDED WITH A HOT FORGE EXPANDED INTERGRAL COUPLING CONNECTION ON ONE END.

MECHANICAL RATING:

TORQUE: 11,000 FT-LB

AXIAL LOAD: 30,000 LBS

SIDE LOAD RATING IN SOIL*:

SIDE LOAD: 600 LB, APPLIED 32 INCHES ABOVE GRADE

*SIDE LOAD RATING ASSUMES:

WATER TABLE BELOW FOUNDATION

2 TO 1 SAFTY FACTOR

MINIMUM BLOW COUNT SOIL OF 4 PER ASTM D1586

5 FT MINIMUM SHAFT LENGTH IN CLAY

7 FT MINIMUM SHAFT LENGTH IN SAND

LATEST EC NO:	REV.	DATE	CHANGED BY	RESP ENGINEER					
EC0823	D	6-3-99	MARTIN	HOYT					
<table border="1"> <tr> <td>QUALS</td> <td>1/26/</td> <td colspan="3">FOUNDATION, COMMUNICATION SYSTEM</td> </tr> </table>					QUALS	1/26/	FOUNDATION, COMMUNICATION SYSTEM		
QUALS	1/26/	FOUNDATION, COMMUNICATION SYSTEM							



POWER SYSTEMS, INC.



DWG NO:

SAT107-0811

CONFIDENTIAL - THIS DRAWING AND ITS CONTENTS ARE CONFIDENTIAL AND THE EXCLUSIVE PROPERTY OF HUBBELL / A.B. CHANCE COMPANY. NO PUBLICATION, DISTRIBUTION OR COPIES MAY BE MADE WITHOUT WRITTEN CONSENT BY HUBBELL / A.B. CHANCE COMPANY. © 2000 HUBBELL/A.B. CHANCE. UNPUBLISHED - ALL RIGHTS RESERVED UNDER THE COPYRIGHT LAWS