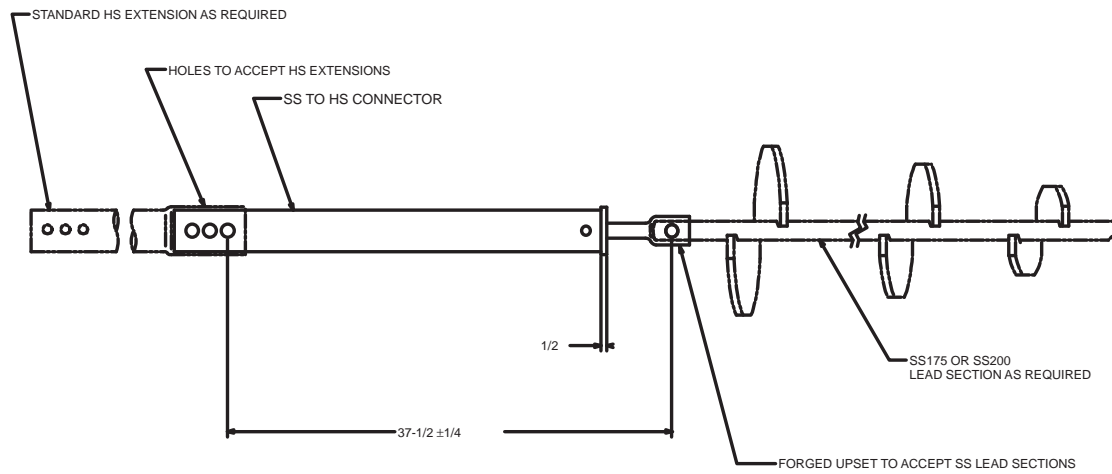


==NOTES==

1. MATERIAL: 3 INCH EXTRA HEAVY STEEL PIPE  
HOT DIP GALVANIZE PER ASTM A153.
2. MANUFACTURER TO HAVE IN EFFECT INDUSTRY RECONIZED  
WRITTEN QUALITY CONTROL FOR ALL MATERIALS AND  
MANUFACTURING PROCESSES.



SS175 TO HS  
SS200 TO HS

CAT. NO.  
T107-0808  
T107-0809

MECHANICAL RATING: TORQUE: 11,000 FT-LB.  
AXIAL LOAD: 100,000 LBS.

LAYER/EC NO.	REV.	DATE	CHANGED BY	RESP. ENGINEER
EC0491	A	2-19-99	MARTIN	HOYT
QUALS	1600	SS TO HS CONNECTOR		
				SAT107-0808