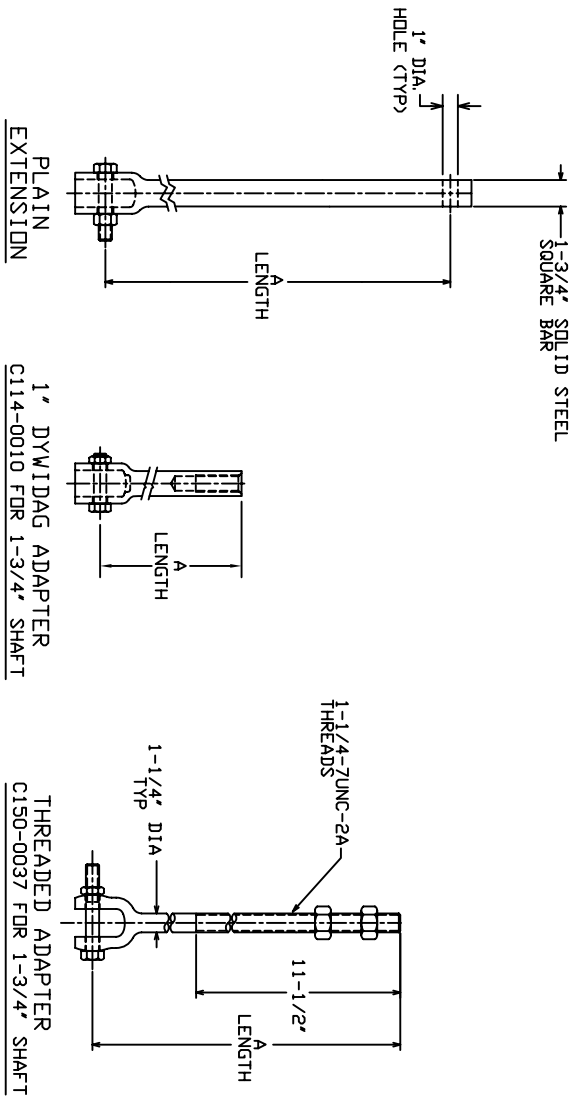


SS175 EXTENSIONS

TORQUE STRENGTH RATING-11,000 FT-LB
 ULTIMATE CAPACITY (COMPRESSION)-110 KIP
 * BASED ON A TORQUE FACTOR (K+)=10
 SINGLE HELIX ULTIMATE STRENGTH-50 KIP
 ULTIMATE TENSION STRENGTH (COUPLING BOLT)-100 KIP

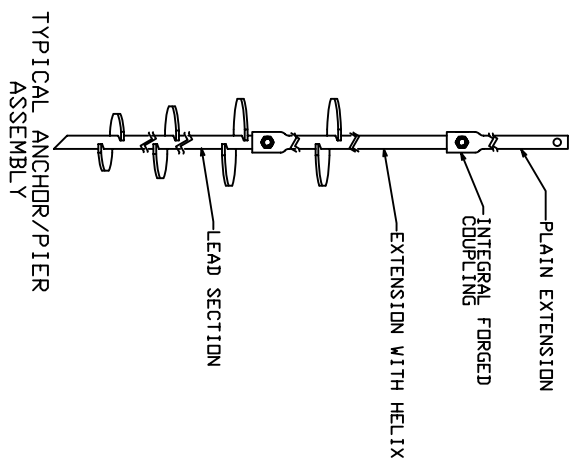
EXTENSION SECTION		
CAT. NO.	A	ICC-EST LISTED
C150-0183	38"	X
C150-0013	59"	X
C150-0014	80"	X
C150-0184	124"	X
C150-0037	20"	
C114-0010	12"	

ICC-ES LISTINGS FORMERLY ICBD AND SBCCI



==NOTES==

- HOT DIP GALVANIZED PER ASTM A153-(LATEST REVISION).
- LEAD AND EXTENSION SECTION LENGTHS AND HELIX SPACINGS ARE NOMINAL, BARS PER ASTM A29; MINIMUM YIELD STRENGTH=90 KSI.
- COUPLING BOLTS: 7/8" DIAMETER X 3-1/2" LONG HEX HEAD PER ASTM A193 GRADE B7.
- MANUFACTURER TO HAVE IN EFFECT INDUSTRY RECOGNIZED WRITTEN QUALITY CONTROL FOR ALL MATERIALS AND MANUFACTURING PROCESSES.
- ALL WELDING TO BE DONE BY WELDERS CERTIFIED UNDER SECTION 5 OF THE AWS CODE D1. 1.
- SEE ICC EVALUATION SERVICE INC., EVALUATION REPORT NO. ER-5110 FOR ALLOWABLE VALUES AND/OR CONDITIONS OF USE CONCERNING MATERIAL PRESENTED IN THIS DOCUMENT.
- REFER TO SA150-10012 FOR LEAD SECTIONS AND HELICAL EXTENSIONS.



ICC-ES LISTED ER-5110

ICC-ES LISTED ER-9504

CHANCE		HUBBELL POWER SYSTEMS	
CONSENT: THE DRAWING AND ITS CONTENTS ARE THE PROPERTY OF HUBBELL POWER SYSTEMS. NO REPRODUCTION OR TRANSMISSION OF ANY KIND IS PERMITTED WITHOUT THE WRITTEN CONSENT OF HUBBELL POWER SYSTEMS. UNPUBLISHED ALL RIGHTS RESERVED UNDER THE COPYRIGHT LAWS.		SIZE	DWG NO.
DO NOT SCALE THIS DRAWING	DRN BY KSH	DATE 4/12/06	SHEET 2/2
SS175 EXTENSIONS		REV	A