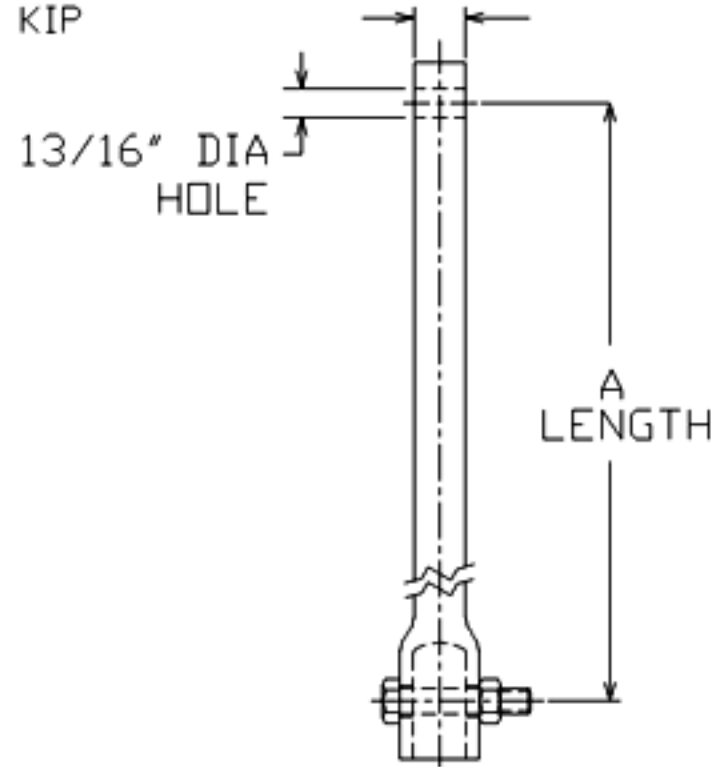


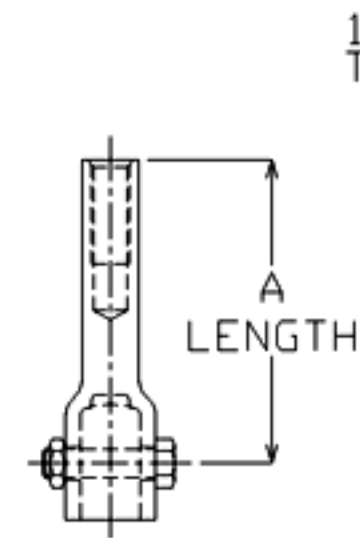
SS150 EXTENSIONS

TORQUE STRENGTH RATING-7,000 FT-LB
 ULTIMATE CAPACITY*(TENSION/COMPRESSION)-70 KIP
 * BASED ON A TORQUE FACTOR (Kt)=10
 SINGLE HELIX ULTIMATE STRENGTH-40 KIP
 ULTIMATE TENSION STRENGTH (COUPLING BOLT)-70 KIP

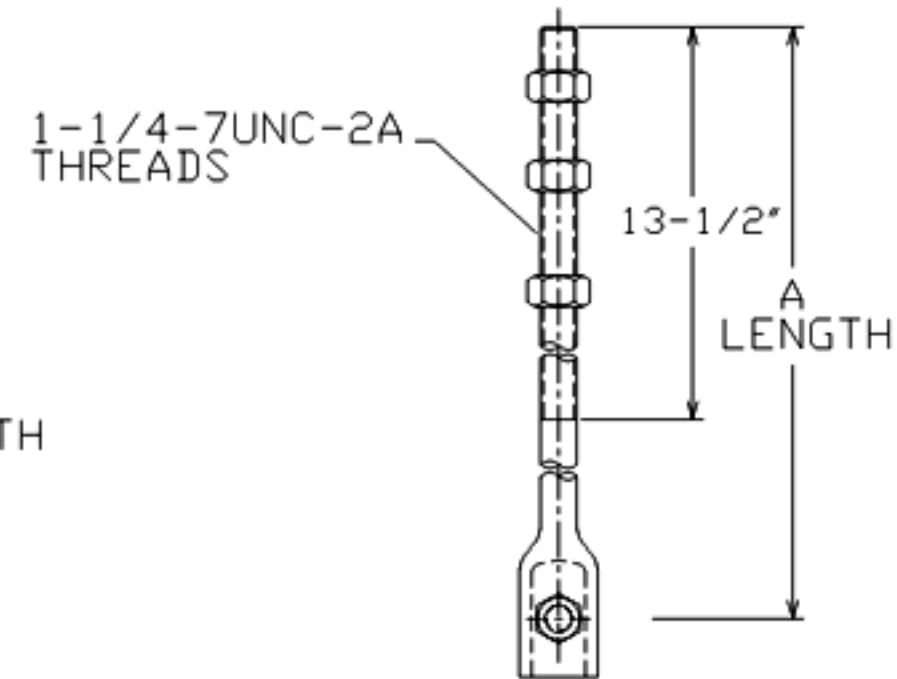
1-1/2" SOLID STEEL
 SQUARE BAR



PLAIN
 EXTENSION



1" DYWIDAG ADAPTER
 C114-0009 FOR 1-1/2" SHAFT



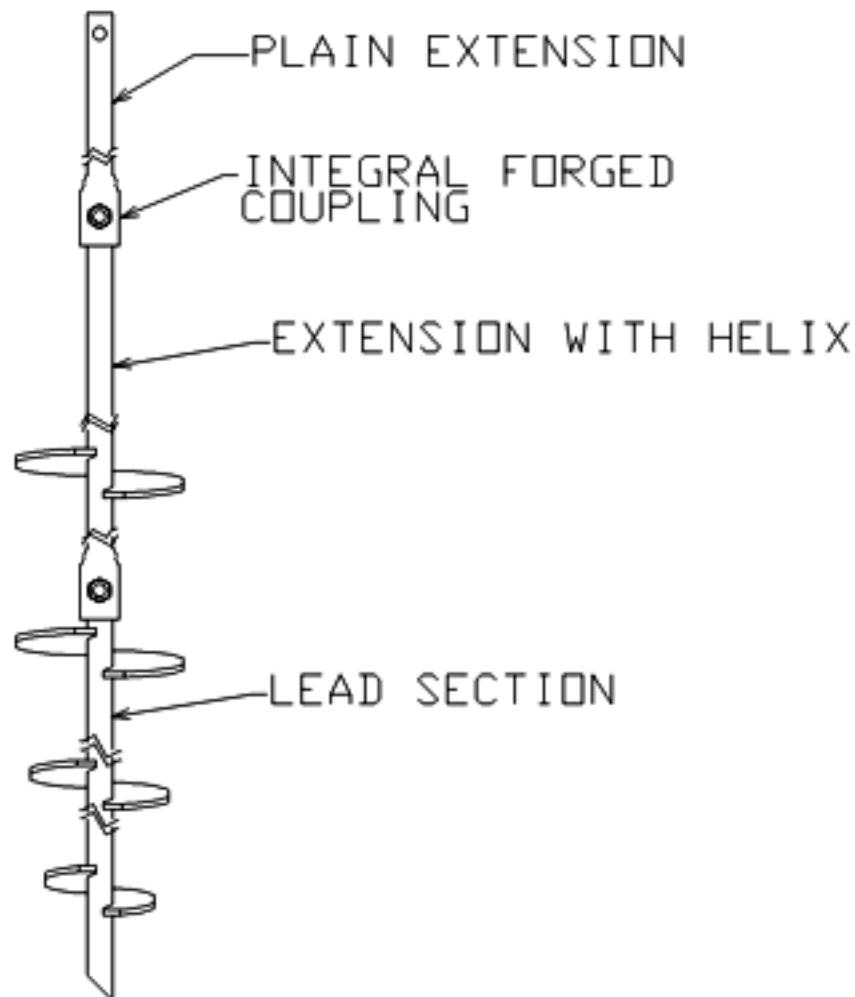
THREADED ADAPTER
 C150-0032 FOR 1-1/2" SHAFT

EXTENSION SECTION		
CAT. NO.	A	ICC-ES* LISTED
C150-0144	38'	X
C150-0145	59'	X
C150-0146	81'	X
C150-0175	124'	X
C150-0032	20'	
C114-0009	11'	

* ICC-ES LISTINGS FORMERLY ICBO, SBCCI, AND BOCA.

==NOTES==

- HOT DIP GALVANIZED PER ASTM A153-(LATEST REVISION).
- LEAD AND EXTENSION SECTION LENGTHS AND HELIX SPACINGS ARE NOMINAL.
- SHAFT MATERIAL-HOT ROLLED ROUND-CORNERED-SQUARE (RCS) SOLID STEEL BARS PER ASTM A29; MINIMUM YIELD STRENGTH=70 KSI.
- COUPLING BOLTS: 3/4" DIAMETER X 3" LONG HEX HEAD PER ASTM A320 GRADE L7.
- MANUFACTURER TO HAVE IN EFFECT INDUSTRY RECOGNIZED WRITTEN QUALITY CONTROL FOR ALL MATERIALS AND MANUFACTURING PROCESSES.
- ALL WELDING TO BE DONE BY WELDERS CERTIFIED UNDER SECTION 5 OF THE AWS CODE D1. 1.
- SEE ICC EVALUATION SERVICE INC., EVALUATION REPORT NO. ER-5110 FOR ALLOWABLE VALUES AND/OR CONDITIONS OF USE CONCERNING MATERIAL PRESENTED IN THIS DOCUMENT.
- REFER TO SA150-10013 FOR LEAD SECTIONS AND HELICAL EXTENSIONS.



TYPICAL ANCHOR/PIER
 ASSEMBLY

ICC-ES
 LISTED
 RR 94-27

ICC-ES
 LISTED
 ER-9504

ICC-ES
 LISTED
 ER-5110

CHANCE		HUBBELL POWER SYSTEMS POWER SYSTEMS, INC.	
CONFIDENTIAL: THIS DRAWING AND ITS CONTENTS ARE CONFIDENTIAL AND THE EXCLUSIVE PROPERTY OF HUBBELL POWER SYSTEMS. NO PUBLICATION, DISTRIBUTION OR COPIES MAY BE MADE WITHOUT THE WRITTEN CONSENT OF HUBBELL POWER SYSTEMS. HUBBELL POWER SYSTEMS UNPUBLISHED. ALL RIGHTS RESERVED UNDER THE COPYRIGHT LAWS.			
TITLE		SS150 EXTENSIONS	
SIZE	DWG NO.	CAT / PART / ASSY NO.	REV
SC	SA150-0144	SEE CHART	--
DO NOT SCALE THIS DRAWING		DRN BY KSH	DATE 4/26/05
		SHEET 2/2	