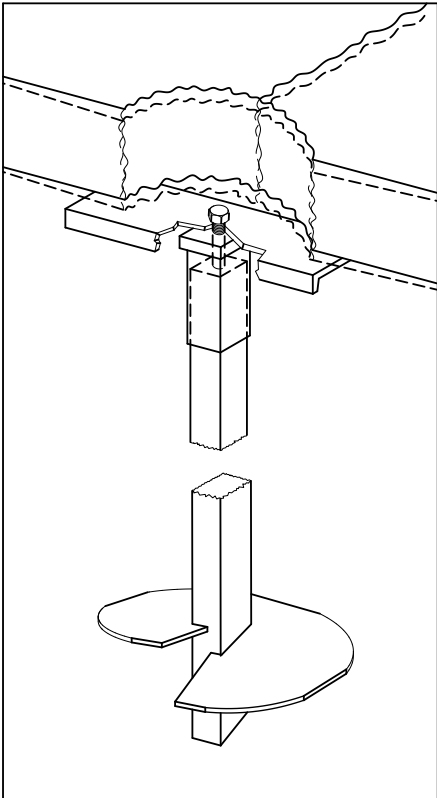
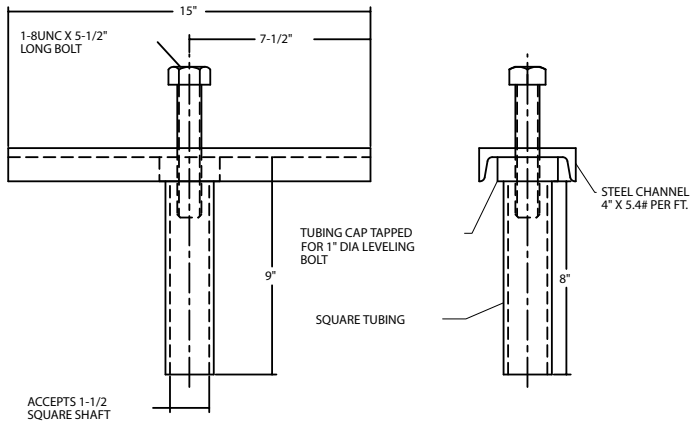


-NOTES-

1. HOT DIP GALVANIZE PER ASTM A-153.
2. MATERIAL SPECIFICATIONS:
 TUBE : ASTM A500 STRUCTURAL STEEL TUBING.
 CHANNEL: PER ASTM A36.
 BOLT : HEX HEAD BOLT PER SAE J429 GRADE 5.
3. FOR DETAILED INSTALLATION INSTRUCTIONS, READ CHANCE BULLETIN 01-8909.
4. SEE ICC EVALUATION SERVICES, INC. EVALUATION REPORT NO. ER-5110 FOR ALLOWABLE VALUES AND/OR CONDITIONS OF USE CONCERNING MATERIAL PRESENTED IN THIS DOCUMENT.



TYPICAL INSTALLATION
OF SLAB REPAIR BRACKET



ACCEPTS 1-1/2
SQUARE SHAFT

MECHANICAL RATINGS ON BRACKET:
 WORKING LOAD: 5,000 LB.
 MAXIMUM LIFTING LOAD: 7500 LB.
 ULTIMATE STRENGTH: 10,000 LB.

CATALOG NUMBER
T150-0085

ICC-ES
LISTED
ER-5110

<small>CONFIDENTIAL: THIS DRAWING AND ITS CONTENTS ARE CONFIDENTIAL AND THE EXCLUSIVE PROPERTY OF HUBBELL POWER SYSTEMS. NO PUBLICATION, DISTRIBUTION OR COPIES MAY BE MADE WITHOUT THE WRITTEN CONSENT OF HUBBELL POWER SYSTEMS. HUBBELL POWER SYSTEMS UNPUBLISHED ALL RIGHTS RESERVED UNDER THE COPYRIGHT LAWS.</small>		TITLE CONCRETE SLAB BRACKET	
<small>SIZE</small> SC	<small>DWG. NO.</small> SA150-0085	<small>CAT. / PART / ASSY. NO.</small> T150-0085	<small>REV</small> B
<small>DO NOT SCALE THIS DRAWING</small>	<small>DRN BY</small> KSH	<small>DATE</small> 9/07/04	<small>SHEET</small> 1/1