

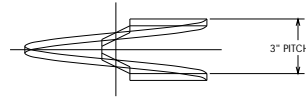
SOIL SCREW RETENTION WALL SYSTEM™

ALLOWABLE TORQUE CAPACITY - 5,500 FT-LBS.

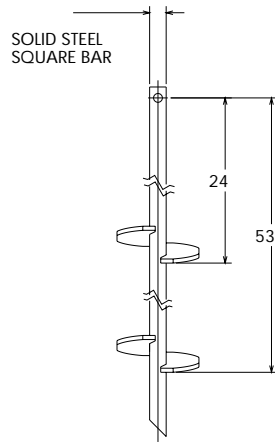
ULTIMATE TENSION STRENGTH OF ANCHORS - 70,000 LBS.

-NOTES-

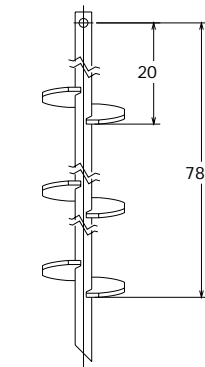
1. HOT DIP GALVANIZED PER ASTM A153-(LATEST REV.)
2. LEAD AND EXTENSION SECTION LENGTHS AND HELIX SPACINGS ARE NOMINAL, EXPECT SOME VARIANCE.
3. MANUFACTURER TO HAVE IN EFFECT INDUSTRY RECOGNIZED WRITTEN QUALITY CONTROL FOR ALL MATERIALS AND MANUFACTURING PROCESSES.
4. ALL WELDING TO BE DONE BY WELDERS CERTIFIED UNDER SECTION 5 OF THE AWS CODE D1.1.



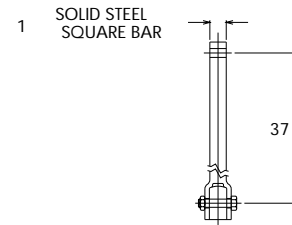
HELIX MUST BE FORMED BY MATCHING METAL DIE
(SIDE VIEW OF TRUE HELICAL FORM)



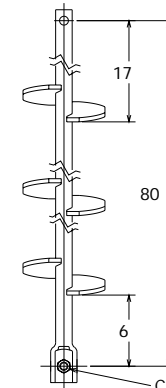
C110-0692
TWIN HELIX
LEAD
SECTION



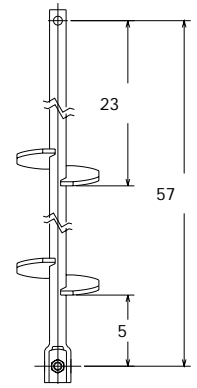
C110-0691
TRIPLE HELIX
LEAD
SECTION



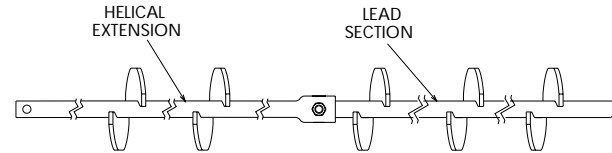
C12655
PLAIN
EXTENSION



C110-0689
TRIPLE HELIX
EXTENSION



C110-0690
TWIN HELIX
EXTENSION



TYPICAL ANCHOR ASSEMBLY

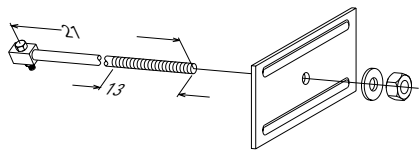


PLATE
PE150-0088

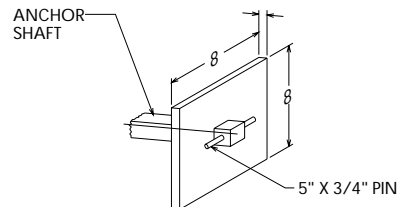


PLATE
C110-0671

LATEST EC NO.	REV.	DATE	CHANGED BY	RESP ENGINEER					
97081208	-	-----	-----	HOYT					
<table border="1"> <tr> <td>QUALLS</td> <td>08.13.97</td> <td colspan="2">SOIL SCREW RETENTION WALL SYSTEM</td> <td></td> </tr> </table>					QUALLS	08.13.97	SOIL SCREW RETENTION WALL SYSTEM		
QUALLS	08.13.97	SOIL SCREW RETENTION WALL SYSTEM							
		POWER SYSTEMS, INC.							
				DWG NO: SA110-10031					

CONFIDENTIAL - THIS DRAWING AND ITS CONTENTS ARE CONFIDENTIAL AND THE EXCLUSIVE PROPERTY OF HUBBELL / A.B. CHANCE COMPANY. NO PUBLICATION, DISTRIBUTION OR COPIES MAY BE MADE WITHOUT WRITTEN CONSENT BY HUBBELL / A.B. CHANCE COMPANY. © 2000 HUBBELL/A.B. CHANCE. UNPUBLISHED - ALL RIGHTS RESERVED UNDER THE COPYRIGHT LAWS