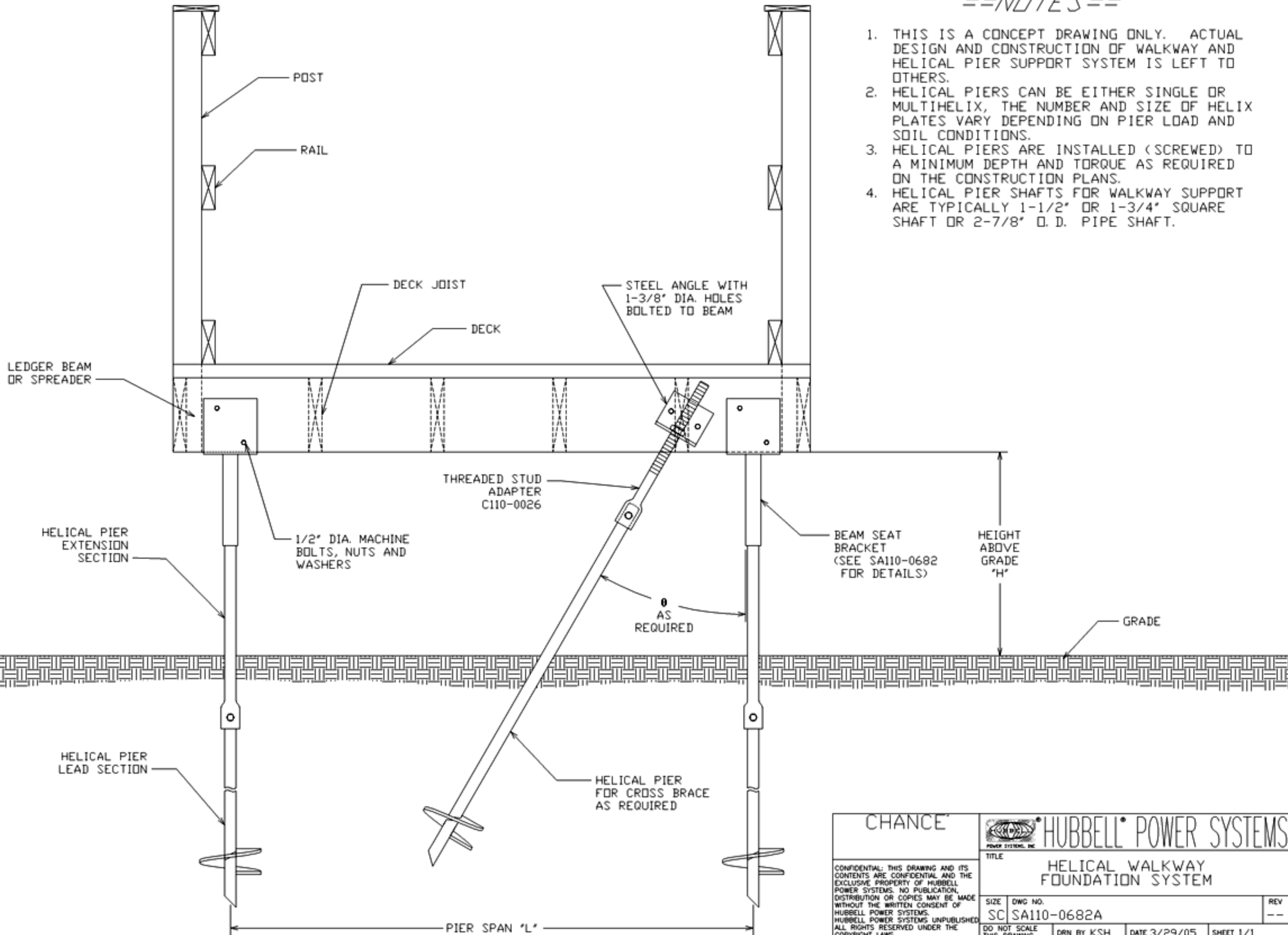


==NOTES==

1. THIS IS A CONCEPT DRAWING ONLY. ACTUAL DESIGN AND CONSTRUCTION OF WALKWAY AND HELICAL PIER SUPPORT SYSTEM IS LEFT TO OTHERS.
2. HELICAL PIERS CAN BE EITHER SINGLE OR MULTIHELIX, THE NUMBER AND SIZE OF HELIX PLATES VARY DEPENDING ON PIER LOAD AND SOIL CONDITIONS.
3. HELICAL PIERS ARE INSTALLED (SCREWED) TO A MINIMUM DEPTH AND TORQUE AS REQUIRED ON THE CONSTRUCTION PLANS.
4. HELICAL PIER SHAFTS FOR WALKWAY SUPPORT ARE TYPICALLY 1-1/2" OR 1-3/4" SQUARE SHAFT OR 2-7/8" O. D. PIPE SHAFT.



CHANCE		HUBBELL POWER SYSTEMS	
CONFIDENTIAL: THIS DRAWING AND ITS CONTENTS ARE CONFIDENTIAL AND THE EXCLUSIVE PROPERTY OF HUBBELL POWER SYSTEMS. NO PUBLICATION, DISTRIBUTION OR COPIES MAY BE MADE WITHOUT THE WRITTEN CONSENT OF HUBBELL POWER SYSTEMS. HUBBELL POWER SYSTEMS UNPUBLISHED ALL RIGHTS RESERVED UNDER THE COPYRIGHT LAWS.		TITLE HELICAL WALKWAY FOUNDATION SYSTEM	
SIZE	DWG NO.	REV	
SC	SA110-0682A	--	
DO NOT SCALE THIS DRAWING	DRN BY KSH	DATE 3/29/05	SHEET 1/1